

HIKVISION EUROPE

Monthly External Technical Newsletter

CONTENTS

New Firmware / Software Release
Product Change / FAQ / Tool Chart
Technical Video Update

Oct 2019

- New Firmware / Software Release
 - [G3 Platform AcuSense IP Camera V5.5.98](#)
 - [G0 Platform IP Camera V5.5.84](#)
 - [E3 Platform IP Camera V5.5.94](#)
 - [R6 Platform IP Camera V5.5.82](#)
 - [H3 Platform PanoVu Camera V5.5.34](#)
 - [R7 Platform PTZ Camera V5.6.14](#)
 - [E6 Platform Wireless IP Camera V5.5.95](#)
 - [I-Series NVR V4.22.000](#)
 - [2nd Generation of DeepinMind NVR V4.1.70](#)
- Product Change Notification
 - [DS-2CD23X7G1 IP Camera](#)
 - [DS-2CD17X1/3 IP Camera](#)
 - [DS-2CD5/7026G0/E IP Camera](#)
 - [DS-2AE52XXT & DS-2DE/F52XX Dome Camera](#)
 - [DS-2DF8AXXX PTZ Camera](#)
 - [DS-2CE1/5/7XXX Analog Camera](#)
- FAQ / Tool Chart/ Technical Video Update
 - [Hikvision Performance Videos on YouTube](#)
 - [Hikvision Explains Live Training Videos](#)
 - [How-to Videos on YouTube](#)

G3 Platform AcuSense IP Camera V5.5.98

The latest V5.5.98 firmware build 190828 for G3 Platform IP Camera has been released.

Compatible Models

DS-2CD2X86G2 Series

New Features

1. Newly release model: DS-2CD2086G2-I(U), DS-2CD2786G2-IZS.
2. Fixed the issue that HTTP Listening and SDK Listening may lose part of alarm information when camera frequently trigger alarm.
3. Smart encoding and smart event can be enabled simultaneously

For more details please refer to the release note.

Location

You can find the firmware and release note on Portal:

http://www.hikvisioneurope.com/portal/?dir=portal/Technical%20Materials/00%20%20Network%20Camera/00%20%20Product%20Firmware/G3%20platform%282XX6G2%29/V5.5.98_Build190828



G0 Platform IP Camera V5.5.84

The latest V5.5.84 firmware build 190822 for G0 Platform IP Camera has been released.

Compatible Models

DS-2CD2047G1-L

New Features

1. Newly support ColorVu model DS-2CD2047G1-L

Improved Features

1. Camera need enter the debug mode before using iperf
2. Support reset password via E-mail on SADP, iVMS4200 and Hik-Connect, set the reserved E-mail address when active camera

For more details please refer to the release note.

Location

You can find the firmware and release note on Portal:

http://www.hikvisioneurope.com/portal/?dir=portal/Technical%20Materials/00%20%20Network%20Camera/00%20%20Product%20Firmware/G0%20platform%281X43G0%201X53G0%202X47G3E%202X4%2751G1-IDW1%272%29/V5.5.84_Build190822%282047%29



E3 Platform IP Camera V5.5.94

The latest V5.5.94 firmware build 190902 for E3 Platform IP Camera has been released.

Compatible Models

DS-2CD1X23, 2X21, 2X23, 2X27 Series

New Features

1. Newly release ColorVu model: DS-2CD2027G1-L
2. 1 series camera support HLC
3. Remove Dual-VCA function to reduce CPU utilization
4. Support reset password via E-mail on SADP, 4200, and Hik-Connect, set the reserved E-mail address when active camera

For more details please refer to the release note.

Location

You can find the firmware and release note on Portal:

http://www.hikvisioneurope.com/portal/?dir=portal/Technical%20Materials/00%20%20Network%20Camera/00%20%20Product%20Firmware/E3%20platform%282X23G0-IW2%20Wi-Fi%2C1X23G0%2C2X21G0%2C2X27G3E%29/V5.5.94_Build190902



R6 Platform IP Camera V5.5.82

The latest V5.5.82 firmware build 190909 for R6 Platform IP Camera has been released.

Compatible Models

DS-2CD2X22, 2X42, 2X52, 1X31, 1X41 Series

Improved Features

1. SD card slot will power down after pulling out SD card.
2. Upgrade ezdevsdk to 1.5.58, fixed the issue that IP address cannot refresh timely when camera access to Hik-Connect

For more details please refer to the release note.

Location

You can find the firmware and release note on Portal:

http://www.hikvisioneurope.com/portal/?dir=portal/Technical%20Materials/00%20%20Network%20Camera/00%20%20Product%20Firmware/R6%20platform%20%282X22FWD%2C%202X42FWD%2C%202X52%2C64X4FWD%2C1X31%2C1X41%29/V5.5.82_Build190909



H3 Platform PanoVu Camera V5.5.34

The latest V5.5.34 firmware build 190924 for H3 Platform PanoVu Camera has been released.

Compatible Models

DS-2CD6DX4 Series

New Features

1. Upgrade the security level.
 2. HTTPS is enabled by default.
 3. Support auto-skip for HTTPS and it is disabled by default
- For more details please refer to the release note.

Location

You can find the firmware and release note on Portal:

http://www.hikvisioneurope.com/portal/?dir=portal/Technical%20Materials/00%20%20Network%20Camera/00%20%20Product%20Firmware/H3%20platform%285xxx%2C7xxx%2C6924%2C6DX4%2C8426%29/DS-2CD6DX4/V5.5.34_Build190924



R7 Platform PTZ Camera V5.6.14

The latest V5.6.14 firmware build 190826 for R7 Platform PTZ Camera has been released.

Compatible Models

DS-2DExxxW, DS-2DFxxxW, DS-2DY3/5/7xxxW Series PTZ

Improved Features

1. The issue that the space beyond 80GB is not available when the NAS disk is larger than 80GB is fixed.
2. Fixed the issue that 2Axxx model self-test probabilistic failure.
3. Fixed the issue that the 2Axxx/3Axxx models had no sound when the PT was in motion.
4. Fixed an issue where the live view of the DS-2DE2Ax04IW-DE3 model would be stuck during motion when the PTZ OSD was turned on.

For more details please refer to the release note.

Location

You can find the firmware and release note on Portal:

PTZ:

http://www.hikvisioneurope.com/portal/?dir=portal/Technical%20Materials/01%20%20PTZ%20amera/00%20%20Product%20Firmware/R7%20series%28DS-2DExxxW%2CDS-2DFxxxW%29/Baseline%20Firmware_IPD_R7/V5.6.14_Build190826

Explosion Proof PTZ:

http://www.hikvisioneurope.com/portal/?dir=portal/Technical%20Materials/01%20%20PTZ%20amera/00%20%20Product%20Firmware/R7%20series%28DS-2DExxxW%2CDS-2DFxxxW%29/Baseline%20Firmware_IPDEX_R7%28%20Explosion%20proof%29/V5.6.14_Build190826

Positioning System:

http://www.hikvisioneurope.com/portal/?dir=portal/Technical%20Materials/01%20%20PTZ%20amera/00%20%20Product%20Firmware/R7%20Positioning%28DS-2DY7xxx%2C5xxx%2C3xxx%29/V5.6.14_Build190826



E6 Platform Wireless IP Camera V5.5.95

The latest V5.5.95 firmware build 190925 for E6 Platform Wireless IP Camera has been released.

Compatible Models

DS-2CD2X21, DS-2CV2X21, DS-2CV1021 Wireless Series



New Features

1. All wireless cameras support webpage
2. Support Two-way audio (for built-in speaker models only)
3. Support online update via Hik-Connect APP (except DS-2CD2421G0-IW)
4. Support highlight compensation, DWDR
5. Support voice broadcast (for built-in speaker models only)
6. Support built-in mic, built-in speaker, SD card slot, Wi-Fi function, reset button, blue and red double color indicator light

For more details please refer to the release note.

Location

You can find the firmware and release note on Portal:

http://www.hikvisioneurope.com/portal/?dir=portal/Technical%20Materials/00%20%20Network%20Camera/00%20%20Product%20Firmware/E6%20platform%20%5BWi-Fi%20%28B%29%20model%2C%202421%5D/V5.5.95_Build190925

I-Series NVR V4.22.000

The latest V4.22.000 firmware build 190821 for I-Series NVR has been released.

Compatible Models

DS-9600NI-I, DS-8600NI-I8, DS-7700NI-I4(B)(/P), DS-7600NI-I2(/P)

New Features

1. Five new types of SHM abnormal alarm are added
2. Ehome 5.0 supports jumping to NVR's Web page to configure parameters (only for Hik-Central platform)

Optimized Features

1. Local playback optimization
2. When playing back remotely, refresh the recording index and the latest recording can be played back immediately
3. Solve some known issues and enhance product stability

For more details please refer to the release note.

Location

You can find the firmware and release note on Portal:

<http://www.hikvisioneurope.com/portal/?dir=portal/Technical%20Materials/02%20%20NVR/00%20%20Product%20Firmware/04%20I-series/%5B76%2077%2096%20NI-I%5D/V4.22.000%20build190821>



2nd Generation DeepinMind NVR V4.1.70

The latest V4.1.70 firmware build 190814 for 2nd Generation DeepinMind NVR has been released.

Compatible Models

iDS-9600NXI (B), iDS-7700NXI (B), iDS-96000NXI-I16 (B), iDS-6700NXI (B)

New Features

1. Optimize face detection and facial recognition algorithm
2. Support configuration of People frequency-frequently appeared & Low frequency person
3. Support Stranger library management

Optimized Features

1. Optimize face picture library
2. Optimize face picture comparison alarm and stranger alarm
3. Optimize file management
4. Optimize search by picture
5. Optimize search by property
6. Optimize alarm display on webpage

For more details please refer to the release note.

Location

You can find the firmware and release note on Portal:

iDS-9600_7700NXI (B):

http://www.hikvisioneurope.com/portal/?dir=portal/Technical%20Materials/02%20%20NVR/00%20%20Product%20Firmware/01%20DeepinMind%20NVR/2nd%20Generation%20DeepinMind/1%20iDS-9600_7700NXI%20%28B%29/4.1.70

iDS-96000NXI-I16 (B):

<http://www.hikvisioneurope.com/portal/?dir=portal/Technical%20Materials/02%20%20NVR/00%20%20Product%20Firmware/01%20DeepinMind%20NVR/2nd%20Generation%20DeepinMind/2%20iDS-96000NXI-I16%20%28B%29/V4.1.70>

DS-6700NXI (B):

<http://www.hikvisioneurope.com/portal/?dir=portal%2FTechnical%20Materials%2F02%20%20NVR%2F00%20%20Product%20Firmware%2F01%20DeepinMind%20NVR%2F2nd%20Generation%20DeepinMind>



DS-2CD23X7G1 IP Camera

Reason of Change

SD card cover material optimization

Description of Change



Change Before	Change After
 <p data-bbox="351 768 434 797">Plastic</p>	 <p data-bbox="983 768 1053 797">Metal</p>

DS-2CD17X1/3 IP Camera

Reason of Change

Remove the silica gel plug

Description of Change

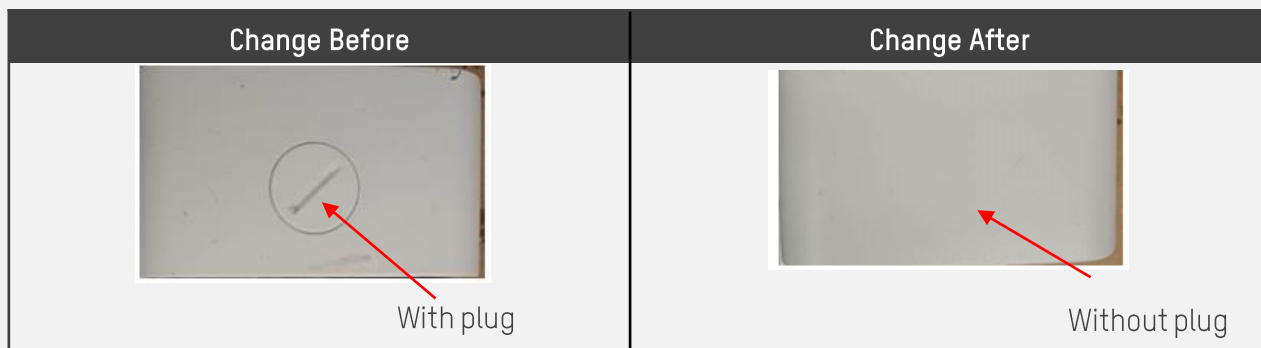
Change Before	Change After
 <p data-bbox="512 1437 686 1466">Silica gel plug</p>	 <p data-bbox="1119 1437 1333 1466">No Silica gel plug</p>

DS-2CD5/7026G0/E IP Camera

Reason of Change

Remove the plug on the housing cover

Description of Change



DS-2AE52XXT & DS-2DE/F52XX Dome Camera

Reason of Change

Upgrade bracket structure

Description of Change

New bracket with mounting instructions and removed labels.



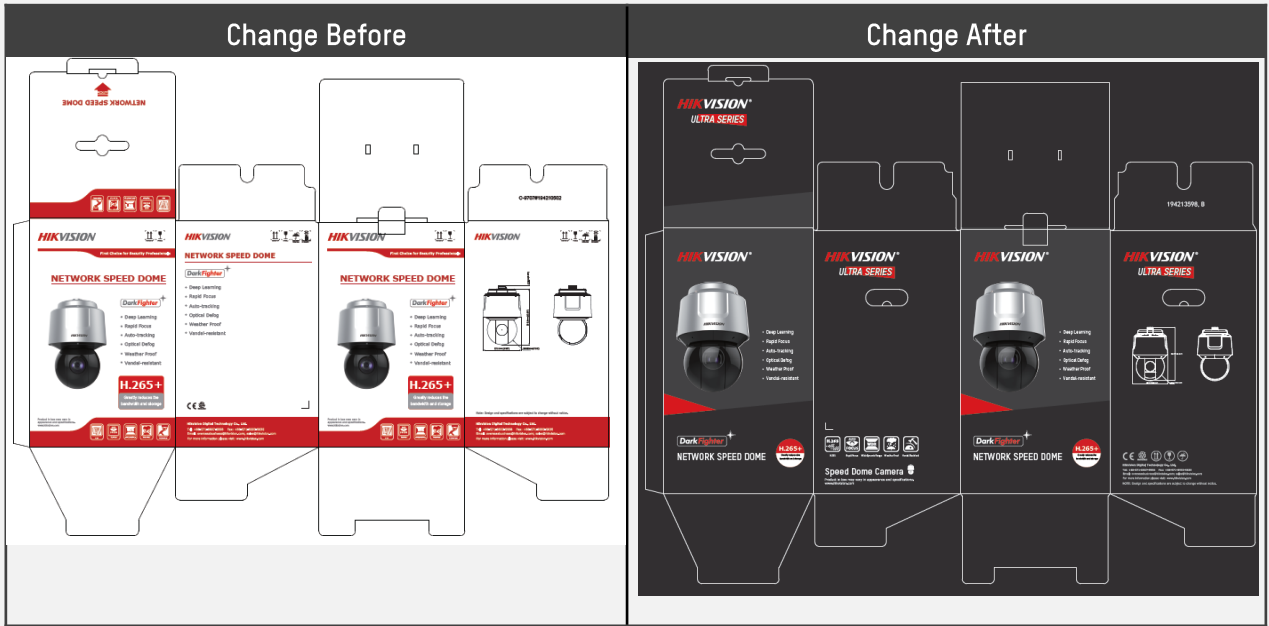
DS-2DF8AXXX PTZ Camera

Reason of Change

Upgrade package color.

Description of Change

Package color upgrade to black

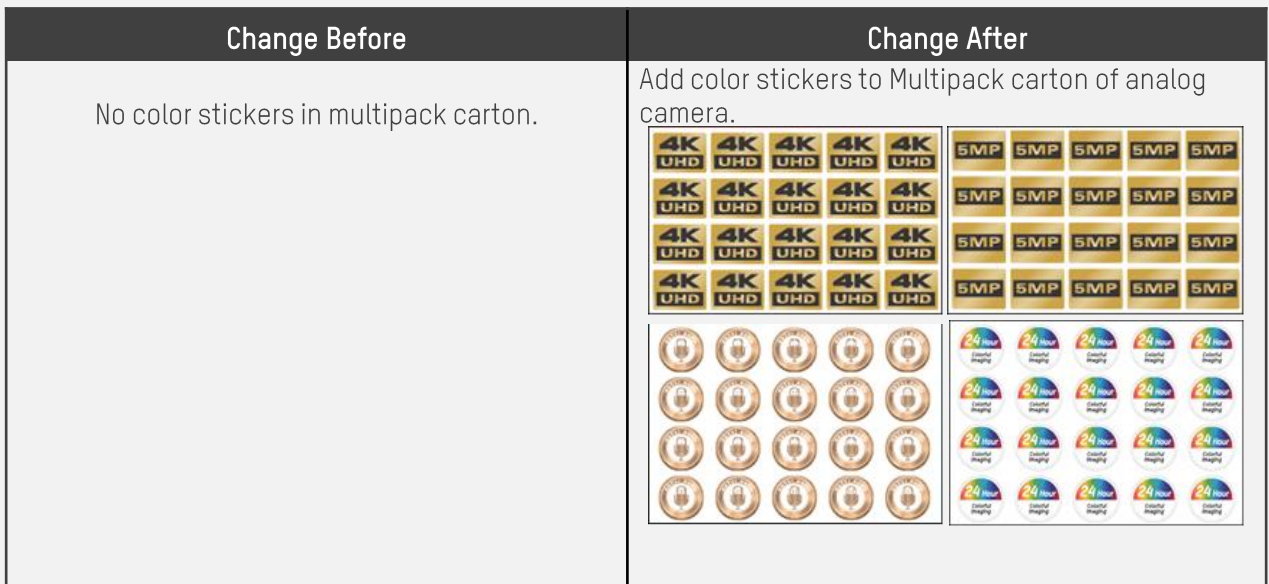


DS-2CE1/5/7XXX Analog Camera

Reason of Change

Add color stickers to Multipack carton of analog camera.

Description of Change



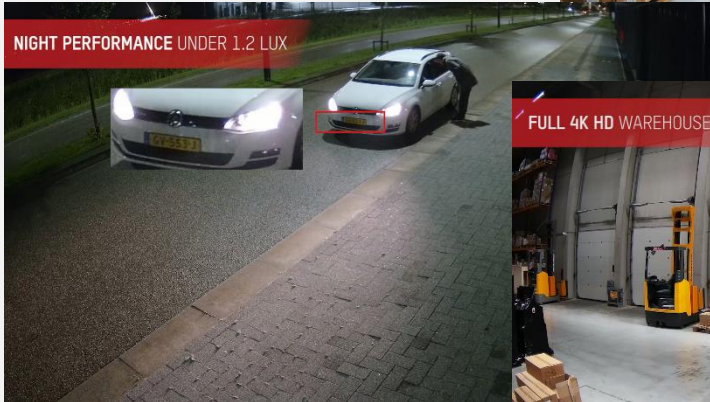
Hikvision Performance Videos on YouTube

Hikvision 4K Performance on Smart IP Series



Main Features

- ✓ 4K Resolution@30fps
- ✓ 120dB WDR
- ✓ Wide FOV
- ✓ Distortion Correction
- ✓ H.265+ Codec
- ✓ Up to 100m IR
- ✓ IP67



Location

You can find the performance video via below link:

https://youtu.be/dJGR-zay-_E

Hikvision Explains Live Training Videos

Thermal Turret Bi-Spectrum

Main Content

- ✓ Performance series camera introduction
- ✓ Unboxing process
- ✓ Image settings including AGC, Image fusion and picture in picture
- ✓ VCA & Temperature measurement
- ✓ Smoking detection

Location

You can find the training video via below link:

<https://vimeo.com/366250000/5dba7684b8>



Thermal Monocular

Main Content

- ✓ New features introduction in UF series
- ✓ Unboxing process
- ✓ User experience optimization
- ✓ Multiple FFC mode
- ✓ Distance measurement
- ✓ Hik-Connect demonstration

Location

You can find the training video via below link:

<https://vimeo.com/366251146/bef7af1a24>



How-to Videos on YouTube

Categories	Video Name	YouTube Link
iVMS-4200 V3.1	How to Activate and Add Hikvision Device to iVMS-4200 via IP Mode	https://youtu.be/e4RMyIcDtLc
	How to Set up Hik-Connect Function in iVMS-4200	https://youtu.be/Hw5vXF3fReE
IPC	How to Configure Wi-Fi Function of Hikvision Camera	https://youtu.be/BG6SWk-jKPk
NVR&DVR 4.0	How to Configure Alarm Input to Trigger Recording	https://youtu.be/9I0wVn1sSFE
	How to Enable Hik Connect on DVR/NVR 4.0 and Add it to Hik Connect APP	https://youtu.be/HdV-ukz0qlA
Batch Tool	How to Batch Configure Hikvision Devices	https://youtu.be/_5pD3xiFrrE
	How to One-Touch Configure Online Device on Batch Configuration Tool	https://youtu.be/UdmusAwEx5M
	How to Batch Upgrade Hikvision Devices	https://youtu.be/wxU0eVr3T1c

END

THANK YOU!

In case you have any questions regarding the content of this newsletter, please address it to product.eu@hikvision.com.